

BRIDGEBORO HISTORIC DISTRICT

This is a detailed historical map of Bridgeboro, New Jersey. The map is oriented with North at the top. It shows a network of streets, including Main Street, Market Street, Bridge Street, and others. The Delaware River is shown at the bottom, and the Delaware Canal runs diagonally through the town. Various buildings and landmarks are depicted, including a large building complex in the center and a bridge crossing the canal. The map is labeled 'BRIDGEBORO HISTORIC DISTRICT' in the upper right corner. A north arrow is located in the lower left corner.

13. Surroundings: ☐ open land ☐ farm ☐ scattered buildings
☐ suburban ☐ urban ☐ commercial
☐ industrial ☒ residential ☐ other

14. Condition of surroundings: ☐ excellent ☐ good ☒ fair
☐ deteriorated

SIGNIFICANCE:

15. Date of initial construction: 1880 ca.

Date of additions:

Architect:

Builder:

Original Owner:

16. N.R. Eligibility: ☐ yes ☒ possible ☐ no as part of district nomination

Representation in existing surveys: ☐ HABS ☐ NJSHI ☐ Ewan
☐ other

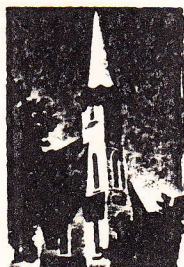
HISTORICAL AND ARCHITECTURAL IMPORTANCE:

17. Theme: Architecture

This grand, Gothic-style church may incorporate the early "M. E. Church" marked on the 1860 Atlas. Though not an exceptional example of its style, it is one of Bridgeboro's main visual landmarks.

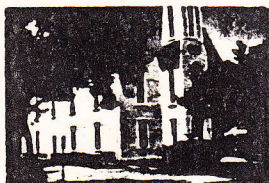
Sources: 1860 Atlas

PHOTO



MAP OR PLOT PLAN

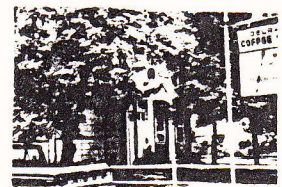
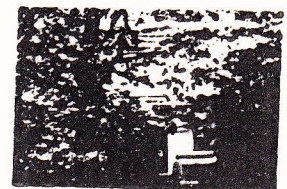
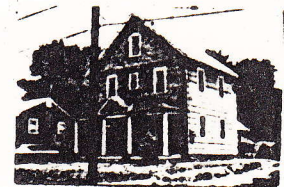
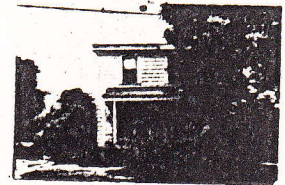
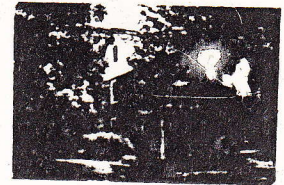
(see attached map.)



Bridgeboro Historic District

List of buildings in Bridgeboro Historic District that have an appearance of age without obvious external evidence of historic integrity or outstanding architectural merit. Historic names, where used, refer to an attached 1860 Atlas of Burlington County. Moorestown Road, as listed on the 1860 Atlas, is now named Bridgeboro Street.

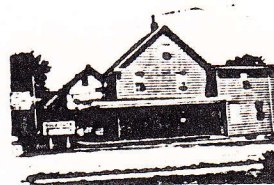
1. W. H. Hyde House, Bridgeboro Street, east side near Laurel Rn., $2\frac{1}{2}$ stories, 3-bays wide, early 19th century frame farmhouse, now covered with asbestos siding.
2. Late Victorian House, east side of Bridgeboro Street, south of Centerton, $2\frac{1}{2}$ stories, 3-bays wide, frame house, with modern replacement roof.
3. Late Victorian House, Bridgeboro Street, south of Centerton, 3-bays wide, $2\frac{1}{2}$ stories, with gable end facing street and rubble stone foundations.
4. W. Piseman House, Bridgeboro Street, south of Centerton Road; $2\frac{1}{2}$ stories, 3-bays wide, frame, early 19th century house.
5. "Store": Bridgeboro Street, south of Centerton Road, 5 bays wide, $2\frac{1}{2}$ stories, frame house with Victorian front porch.
6. W. Lyttle; Corner Bridgeboro and Centerton Road, 3 bays-wide, $2\frac{1}{2}$ stories, frame house covered with asbestos siding.



7. Late Victorian House, Bridgeboro Street, opposite Walnut, 2½ stories, 3-bays wide, frame house with cross gable roof.



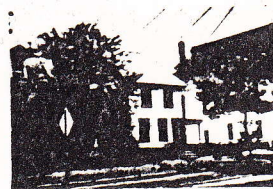
8. "Bridgeboro Deli", corner of Walnut and Bridgeboro Street, 2½ stories, 2-bays wide, frame house, much altered.



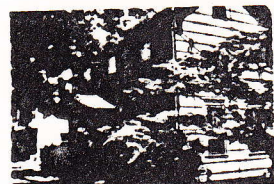
9. Dr. Parkinson house, Bridgeboro Street, 2½ stories, 3-bays wide, frame house with two dormers piercing pitched, metal roof.



10. R. Habbs house, Bridgeboro Street, 2½ stories, 3-bays wide, frame house with metal roof added.



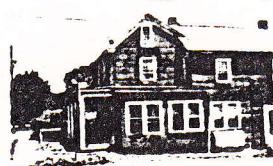
11. S. Andrews, Bridgeboro Street, 2½ stories, 3-bays wide, frame house presently covered with asbestos shingles.



12. Late Victorian house, Bridgeboro Street, across from M. E. Church. 2½ stories, 5-bays wide, frame house with Victorian porch and shop windows.



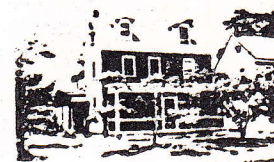
13. J. Andrews, Bridgeboro Street, 2½ stories, 2-bays wide frame house with many Victorian and modern additions, presently covered with composition siding.



14. Late Victorian house, corner Church and Bridgeboro Street, 2½ stories, frame house with "T" shaped plan, gable end facing the street, and Victorian porches.



15. E. H. Owens house, Bridgeboro Street, 2½ stories, 3-bays wide, frame house with two dormers, screened in front porch.



16. A. P. Bright house, Bridgeboro Street, 2½ stories, 4-bays wide, frame house with metal roof.



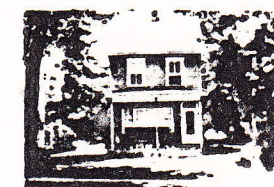
17. J. Witsil house, Bridgeboro Street, 2½ stories, 4-bays wide, frame house with cross gable and pointed arched attic windows added.



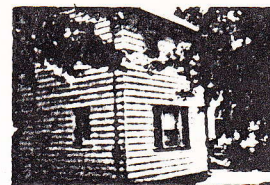
18. I. Merrell House, Bridgeboro Street, 2½ stories, 3-bays wide, frame house, with gambrel-roofed dormer added.



19. Babbington house, Mulberry and Bridgeboro Streets, 2-bays wide, 2½ stories, frame house with modern picture window on first floor.



20. Bernard House, Mulberry and Bridgeboro Streets, 2½ stories, 2-bays wide, frame house, much altered.



21. Late Victorian house, Mulberry and Bridgeboro Streets, 2½ stories, 5-bays wide, frame house with cross gable roof; presently covered with asbestos siding.



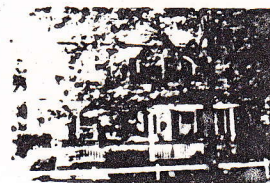
22. "M[?]ner Store", Bridgeboro and Division, 2½ stories, 2-bays wide, frame house with storefront to north gable end.



23. A Myers House, Bridgeboro Street, 2½ stories, 4-bays wide, double house, much changed with Victorian and modern alterations.



24. W. Lippincott, Bridgeboro Street, 2½ stories, 4-bays wide, frame, double house with Victorian alterations.



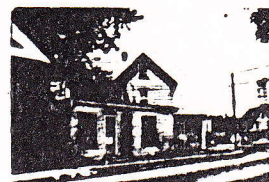
25. C. Gaskill, Bridgeboro Street, 2½ stories, 3-bays wide, frame house much altered.



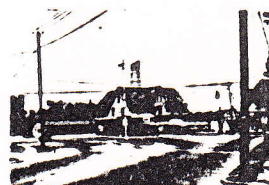
26. Mrs. Hackney's House, Bridgeboro Street near Route 130, 4-bays wide, 2½ stories, frame house with Victorian porch, partially covered with aluminum siding.



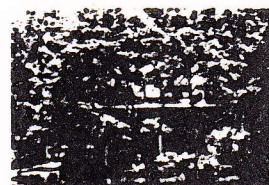
27. D. S. Loudon, Bridgeboro Street near Route 130, 2½ stories, 3-bays wide, one-room deep house with "L" shaped plan.



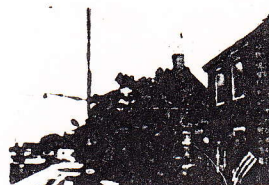
28. "Store" Bridgeboro Lounge, Route 130 and Bridgeboro. Substantial 6-bays wide, frame structure, with gambrel-roofed dormer, "modernized" on first floor.



29. W. Lippincott House, 2½ stories, Greek Revival, 3-bays wide, covered with asbestos siding.



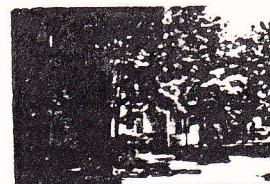
30. Perkins House; Route 130 near Bridgeboro Street; 2½ stories, 4-bays wide, early 19th century frame house presently vacant.



31. Bishop House, Route 130 near Bridgeboro Street, 2-bays wide, 2½ stories, frame house, covered with asbestos siding.



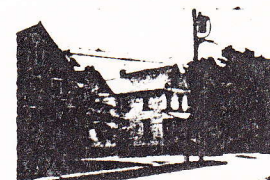
32. S. Johnson House, Bridgeboro Street, 2½ stories, 5-bays wide, frame house with one story addition.



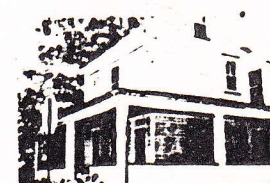
33. Late Victorian houses, Bridgeboro Street near Cleveland, 3 identical frame houses, 2½ stories, 2-bays wide, with cross gable roofs and ornamental bargeboards.



34. Between Division and Mulberry on east side of Bridgeboro Street, late Victorian Houses, 2 frame houses, 3-bays wide, pitched roofs with gables facing street; decorative Victorian porches.



35. Late Victorian house, corner of Division and Bridgeboro, west side, 3 bays, frame house, 2/2 window, and modern porches.



36. Late Victorian house between Division and Mulberry, house identical to those previously described in #33.



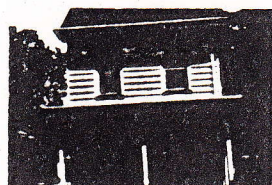
37. Late Victorian House, between Division and Mulberry, 2½ stories, 3-bays wide, frame house, covered with asbestos siding, similar to #35.



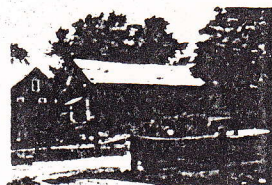
38. Late 19th century houses, Creek Road, near Spruce, 2 frame houses, 2-bays wide, 2½ stories, with various modern additions.



39. Mid-19th century houses, Ferry and Creek (opposite sides of road), two 2½ story, 2-bay wide, frame houses with vinyl siding.



40. Possibly, old school house near 130 on Creek Road, presently used for storage, 1½ story frame structure.



41. Late Victorian house, corner of Creek Road and Route 130. 2½ stories, 4-bays wide, one frame double house with cross gable roof.



42. J. Bramble house, corner Creek Road and Route 130, 2½ stories, 3-bays wide, frame house, with decorative Victorian bargeboards.



13. Surroundings: open land X farm scattered buildings
 suburban urban commercial
 industrial residential other

14. Condition of surroundings: excellent X good fair
 deteriorated

SIGNIFICANCE:

15. Date of initial construction: 2nd quarter 19th century
Date of additions:
Architect:
Builder:
Original Owner:

16. N.R. Eligibility: yes X possible no

Representation in existing surveys: HABS NJSHI Ewan
 other

HISTORICAL AND ARCHITECTURAL IMPORTANCE:

17. Theme: Architecture

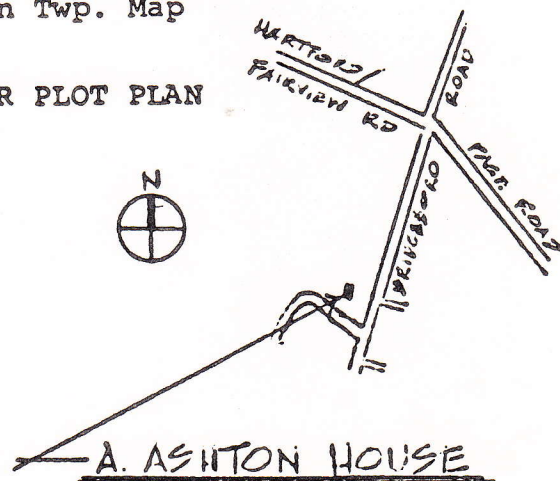
This farmhouse is an interesting Victorian house of the mid-19th century, showing design influences of both Greek Revival and Italianate styles.

Sources: 1860 Atlas

 1 on Twp. Map

PHOTO

MAP OR PLOT PLAN



13. Surroundings: open land x farm scattered buildings
 suburban urban commercial
 industrial residential other
14. Condition of surroundings: excellent x good fair
 deteriorated

SIGNIFICANCE:

15. Date of initial construction: 1881 "D & M T.C." (cornerstone)
Date of additions:
Architect:
Builder:
Original Owner:
16. N.R. Eligibility: x yes possible no
Representation in existing surveys: HABS NJSHI Ewan
 other

HISTORICAL AND ARCHITECTURAL IMPORTANCE:

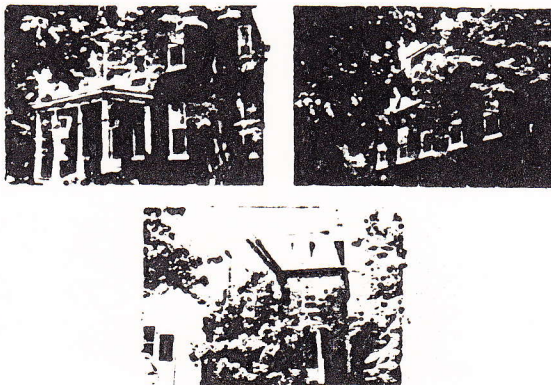
17. Theme: Architecture

This grand, mansard-style farmhouse is a good example of its period and style with few exterior alternations.

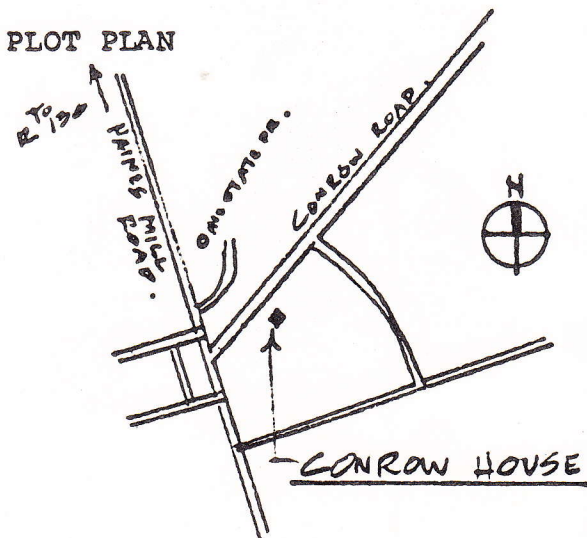
Sources: 1860 Atlas

 2 on Twp. Map

PHOTO



MAP OR PLOT PLAN



Conrow House, Deliverance & Darling

-2-

13. Surroundings: ☐ open land ☒ farm ☐ scattered buildings
☐ suburban ☐ urban ☐ commercial
☐ industrial ☐ residential ☐ other
14. Condition of surroundings: ☒ excellent ☐ good ☐ fair
☐ deteriorated

SIGNIFICANCE:

15. Date of initial construction: 1751
Date of additions:
Architect:
Builder:
Original Owner: Darling Conrow
16. N.R. Eligibility: ☒ yes ☐ possible ☐ no
Representation in existing surveys: ☐ HABS ☐ NJSHI ☒ Ewan
☐ other

HISTORICAL AND ARCHITECTURAL IMPORTANCE:

17. Theme: Architecture

This brick building is a good example of an early vernacular farmhouse with surprisingly few alterations. The two unusual 10 panel, 18th century doors are of particular architectural interest.

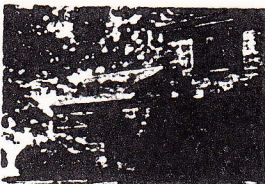
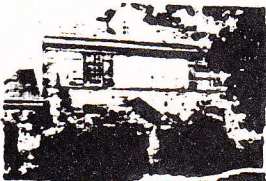
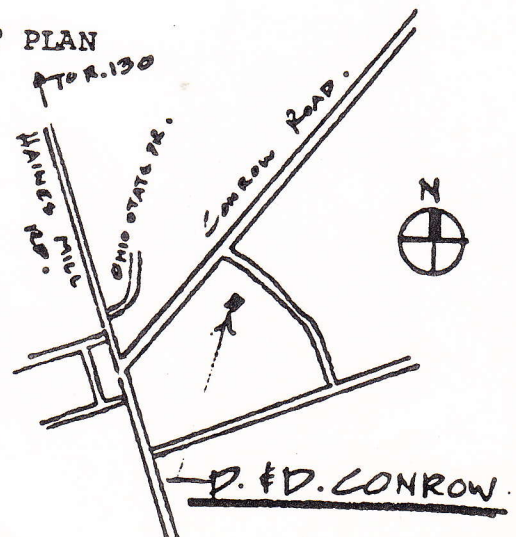
Sources: Ewan Inventory

3 on Twp. Map

PHOTO



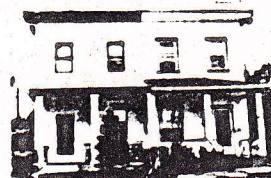
MAP OR PLOT PLAN



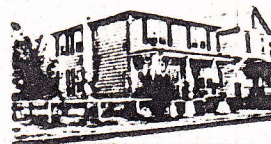
List of buildings in Delran Township that have an appearance of age, but without obvious external evidence of historic integrity or outstanding architectural merit. Historic names, where used, refer to an 1860 Atlas of Burlington County.

First eleven houses are the old buildings that remain in the village of Cambridge, Delran Township.

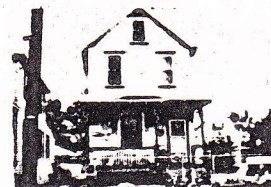
1. Victorian row house, Front Street between Chestnut and main; 2-story, stucco covered, 4-bay wide double house.



2. Victorian row house, Front Street between Chestnut and Main, 4-bays wide, frame, double house, with hipped roof and modern siding



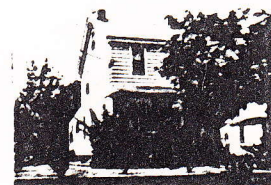
3. Victorian house, Front Street near Main, 2½ story, 2-bay wide, frame house with gable end facing the street.



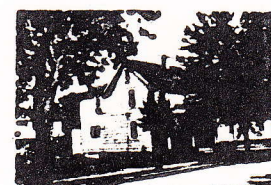
4. J. Cameron House, Main Street between 4th and 3rd Street. Mid 19th century, 2-bay wide, 2½ story, frame house with modern roof and siding.



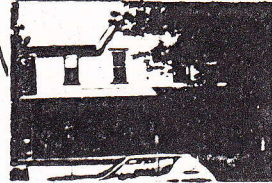
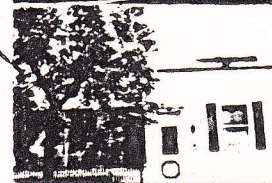
5. J. Cameron, same as above except with modern porch on front; nearer to corner of Main and 3rd Street.



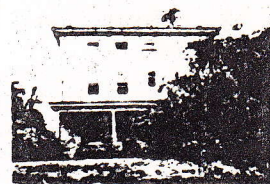
6. 19th century house, Main Street between 3rd and 2nd, 2½ story, 3-bays wide, frame house with stone foundation.



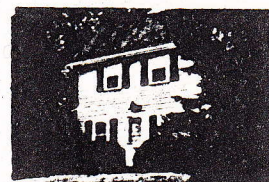
7. Victorian house, Main Street between 3rd and 2nd, 2½ story, "L" shaped, frame house with gable end facing the street.
8. Victorian houses, Main Street between Front and Second. Three, 2½ story, frame, double houses with cross gable roofs; much altered.
9. Late Victorian house, Chestnut between 2nd and 3rd. 2½ story, "L" shaped frame house with cross gable roof; porch around 3 sides.
10. Victorian store front and residence, corner 3rd and Chestnut, 2½ story, frame building, with cross gable roof, corner entrance cut at 45° angle.
11. Mid 19th century frame houses, Brown Street between 3rd and 2nd. Two, 2½ story, frame houses, with late Victorian porches.
12. N. Haines Est., south Chester Avenue near Route 130. 2½ story, 3-bay wide, frame farm house, presently covered with asbestos siding.
13. E. Martin House, Haines Mill Road, south of Route 130, 3-bays wide, by 3-bays deep, 2½ story Greek Revival house; stucco covered with flat roof.



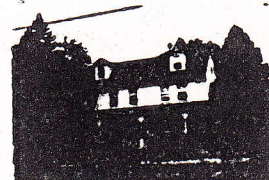
14. Pattern Book Italianate, Haines Mill Drive near Ohio State Drive, 3-story, 4-bays wide, double house with flat roof and eyebrow windows.



15. Pierson House, Haines Mill Drive south of Hunter. 2½ story, 3-bays wide, frame 19th century house; with modern shake roof.



16. Late Victorian house, Conrow Road, 5-bays wide, 2½ story, frame double house.



17. Koch's Farm Market, Conrow Road, 2½ story, 2-bays wide, 19th century farm house, much altered.



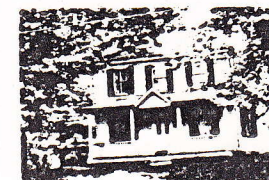
18. D. Strothers House, corner Hartford Drive and Conrow, 2½ story, 3-bays wide, farm house with modern porch.



19. J. B. Meeks House, Hartford Drive near Moorestown/Bridgeboro Road, 2½ story, 4-bays wide, frame farm house, with 2-story addition to rear, much altered.



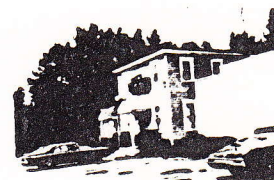
20. Late Victorian house, Moorestown/Bridgeboro Road, 2½ story, 3-bays wide, frame house with Victorian front porch.



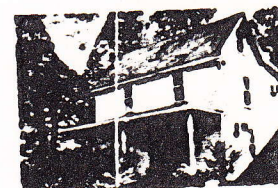
21. Late Victorian farm house, Bridgeboro and Moorestown Road, 2½ story house, with "L" shape plan, presently covered with aluminum siding.



22. D. Strother house, Ott's Laurel Run Tavern, northeast corner of Moorestown/Bridgeboro Road and Page Road. 2-story, 3-bays wide, Greek Revival much altered.



23. Victorian tenant farm, Page Road east of Bridgeboro Road, 2½ story, 2-bays wide, frame farm house with saltbox addition to rear.



24. Federal-style farm house, Page Road east of Bridgeboro Road, 2½ story, 5-bays wide, frame farm house presently covered with shingles, presently vacant. (Dreher* is name on mailbox.)



25. 19th century frame farm house, Hartford/Fairview Road next to Delran H. S. 2½-story, 3-bays wide, with modern enclosed front porch.



26. Late Victorian farm house, Hartford Fairview, near Route 130, 2½ story, 3-bays wide, with cross gable roof; front porch supported on turned columns.



27. Riverdale Real Estate, Route 130 east of Haines Mill Road, Victorian Italianate, covered with stucco with hipped roof, 3-bays wide, 2½ story.



28. 19th century house, Route 130 east of Haines Mill Road, 3-bays wide, 2½ story, frame house with modern enclosed front porch, and gambrel-roofed dormer centrally located on roof.



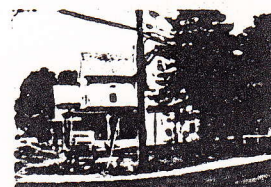
29. Mid 19th century house, Route 130 east of Haines Mill Road. Two, 2½ story, 2-bays wide, frame houses.



30. Mid- - 19th century frame house, corner Hartford/Fairview Road and Route 130, 2½ story, 2-bays wide, with modern enclosed front porch.



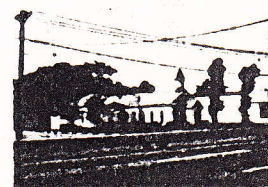
31. Late Victorian farm house, corner Hartford/Fairview Road and Route 130, 2½ stories, "L" shaped, frame house with cross gable roof; original Victorian porch.



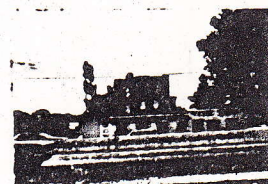
32. Late Victorian house, Route 130 east of Hartford/Fairview Road, 2½ stories, 3-bays wide, frame house with gable facing street.



33. Trinity Episcopal Church, Route 130, east of Hartford Road. Well detailed late Victorian-Gothic structure, $1\frac{1}{2}$ stories, stucco covered, "L" shaped plan with conical belfry.



34. Mansard-style house, "Wicker Mystic Candles," Route 130 near Bridgeboro, $2\frac{1}{2}$ story, 2-bays wide, frame house dormer centrally located, much altered on first floor.



35. Mansard style house, Fairview Street between Frech and Ridgewood, 3-stories, 2-bays wide, frame house presently covered with asbestos siding.



36. "Sunken Meadow Acres Farm," marked "A.S." on 1860 Atlas, Creek Road near Boundary Creek, access impossible at time of survey -- to be investigated.

37. Late Victorian house, Creek Road, $\frac{1}{2}$ mile east of Bridgeboro, $2\frac{1}{2}$ stories, 3-bays wide, frame house with cross gable roof.



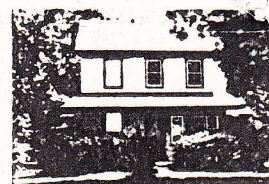
38. Mid 19th century house, Creek Road, $2\frac{1}{2}$ stories, 4-bays wide, frame house, much altered.



39. Late Victorian house, Creek Road, 2½ stories, 2-bays wide, frame house with cross gable roof.



40. S. Vivtan(?) house, mid 19th century house, Creek Road, 3-bays wide, 2½ story farmhouse, much altered.



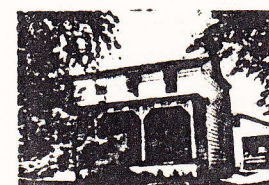
41. Mid 19th century house, Creek Road, 1/8th mile east of Bridgeboro, 2½ stories, 3-bays wide, frame house with 2 story addition to rear; decorative Victorian bargeboards.



42. Mansard style house, Creek Road near Melrose, 4 bays, 3-story, frame house, with "L" shaped plan.



43. J. Smith house, Bridgeboro/Moorestown Road north of Page Road, 2½ story, 3-bays wide, frame house with 2-story shed addition to rear, decorative Victorian lattice work on front porch.



44. W. Hodges(?) house, Bridgeboro/Moorestown Road north of Page Road, 2½ stories, 3-bays wide, frame house, with 2-story shed addition to south gable end.



45. Late Victorian tenant house, 1/8th mile north of Page Road on Bridgeboro Road, 3 bays, 2½ stories, frame house.



46. G. Jeffrie House, Bridgeboro north of Page Road, 2 story, Greek Revival house, 3 bays wide, brick, with Victorian front porch.

